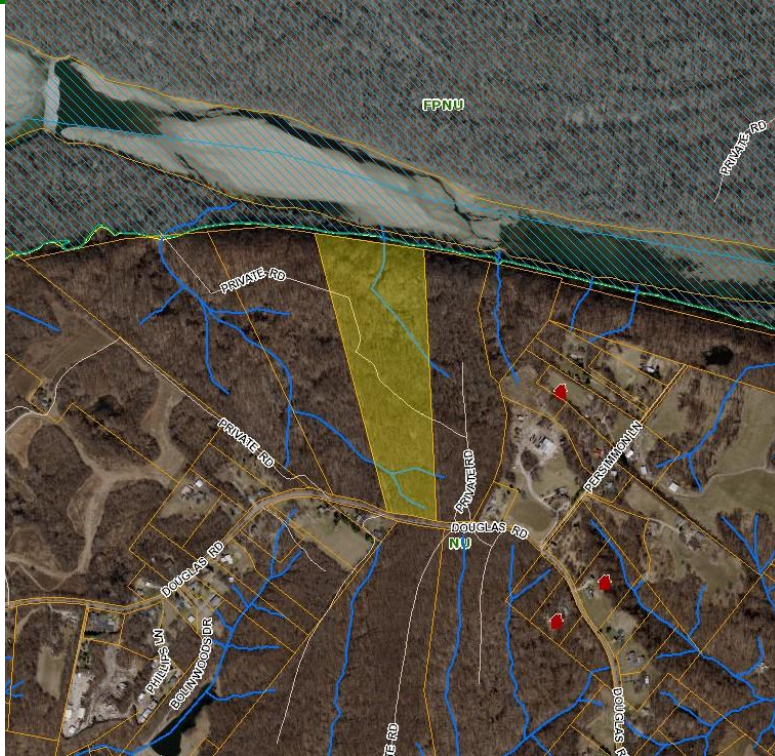


FOR SALE  
LAND

3313 Douglas Road  
St. Louis, Missouri 63034



**PROPERTY DATA**

**SIZE:** 34.85 Acres  
**ACCESS:** Douglas Road  
**MUNICIPALITY:** Unincorporated  
**CURRENT ZONING:** NU, Non-Urban  
**LOCATOR NUMBER:** 03J 53 0060  
**PROPOSED:** Residential, Recreational, Intuitional  
**ASKING PRICE:** \$195,000



**FOR MORE INFORMATION**

Edward W. Dinan, CRE®  
Taylor C. Dinan, CRE®  
(314) 647-9900  
edinan@dinanreal.com

**DINAN REAL ESTATE ADVISORS, INC.**

2023 South Big Bend Boulevard, St. Louis, Missouri 63117